

Q.1 (A) Multiple Choice Questions.

(5)

- 1) Which is true about Herbicide tolerant plants.
 - a. Selectively destroy the weeds
 - b. They have beneficial effects on crops
 - c. They have harmful effects on crops as well
 - d. Nothing like this exists

- 2) form the colonies of useful microbes in alimentary canal and control other microbes and their metabolic activities, improve resistance.
 - i. Carbohydrate ii. Vitamins iii. Probiotics iv. Proteins

- 3) Heart in chordates is present on side of body.
 - a. dorsal b. ventral c. dorso-ventral d. lateral

- 4) Which of the following is man-made disaster ?
 - a. Forced migration b. Floods c. Infectious diseases d. Erosion

- 5) is the largest organization engaged in environmental activities.
 - a. BNHS b. UNEP c. WWF d. Green Peace

(B) Solve the following questions.

(5)

1) Find co-related terms

Get rid of waste : Excretion :: Assimilation of food for growth :

2) Find the odd one out.

Transferases, Lyases, Ligases, Rennet

3) Match the pair.

Column "A"	Column "B"
i. Earthquakes	a. Plants
ii. Wars	b. Geological
	c. Man made

4) State true or false.

It is advisable to disclose the aadhaar / PAN /credit card / debit card number and other personal information if demanded by any person.

5) Name the following.

Pseudocoelomates/Round worms

Q.2 A) Give scientific reason. (Any two)

(4)

- 1) After doing physical activity, we feel hungry.

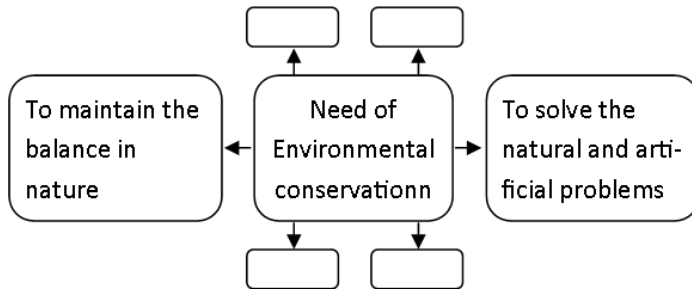
2) Nowadays, safer vaccines are being produced.

3) Duck billed Platypus is a connecting link.

B) Solve the following questions. (Any three)

(6)

1) **Complete the chart**



2) **Distinguish Between**

Apiculture and Vermiculture

3) Animals belonging to phylum Porifera






4) Explain the importance of good communication with others ?

5) Write short note on Power generation plants.

Q.3 Solve the following questions. (Any five)

(15)

1) Now-a-days, instead of chemical catalysts, microbial enzymes are used in chemical industry ? Explain ?

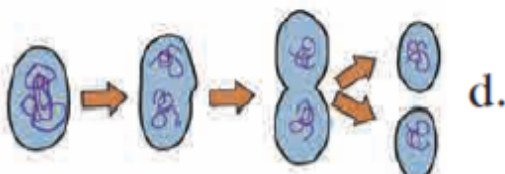
Symbol					
Meaning of Symbol	(a)	(b)	(c)	(d)	(e)

3) **Complete the sentences.**

(Lungs, heart, carcinogenic, nervous, intoxicating, hazardous, addictions, peer-group, useful)

The children fall into the trap of either due to pressure or due to false symbol of high standard living. Sometimes they try to imitate their elders. The addictive substances are, and they cause long term effects. Some are temporarily substances obtained from the plants. While some of the chemical ingredients in them can permanently damage the human system, muscular system,, etc. Some tobacco like substances are in action especially on the mouth and

4)



- i. Does this method of reproduction favour variation ? Why ?
- ii. Name the method of reproduction depicted here ?
- iii. Name the Organism in which you find this method of reproduction ?

- 5) 1. State the principle of Electromagnetic Induction ?
 2. Where is the principle used ?
 3. Who gave this principle ?

6) Vestigial organs, though non-functional in certain organism, it may be functional in other organisms. Explain.

7) State the type of disaster. Which precautions would you take during those disasters?



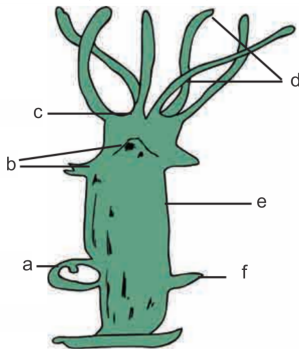
A

- 8) i. Why some living organisms have to perform anaerobic respiration?
- ii. Give examples of such living organisms.
- iii. What are the two steps of anaerobic respiration?

Q.4 Solve the following questions. (Any one)

(5)

1) Label a diagram of Hydra. Give any four characters of its phylum.



2) Label diagram of Round worm. Give any four examples of Aschelminthes.

